

# MANOR FOREST PLAT 3

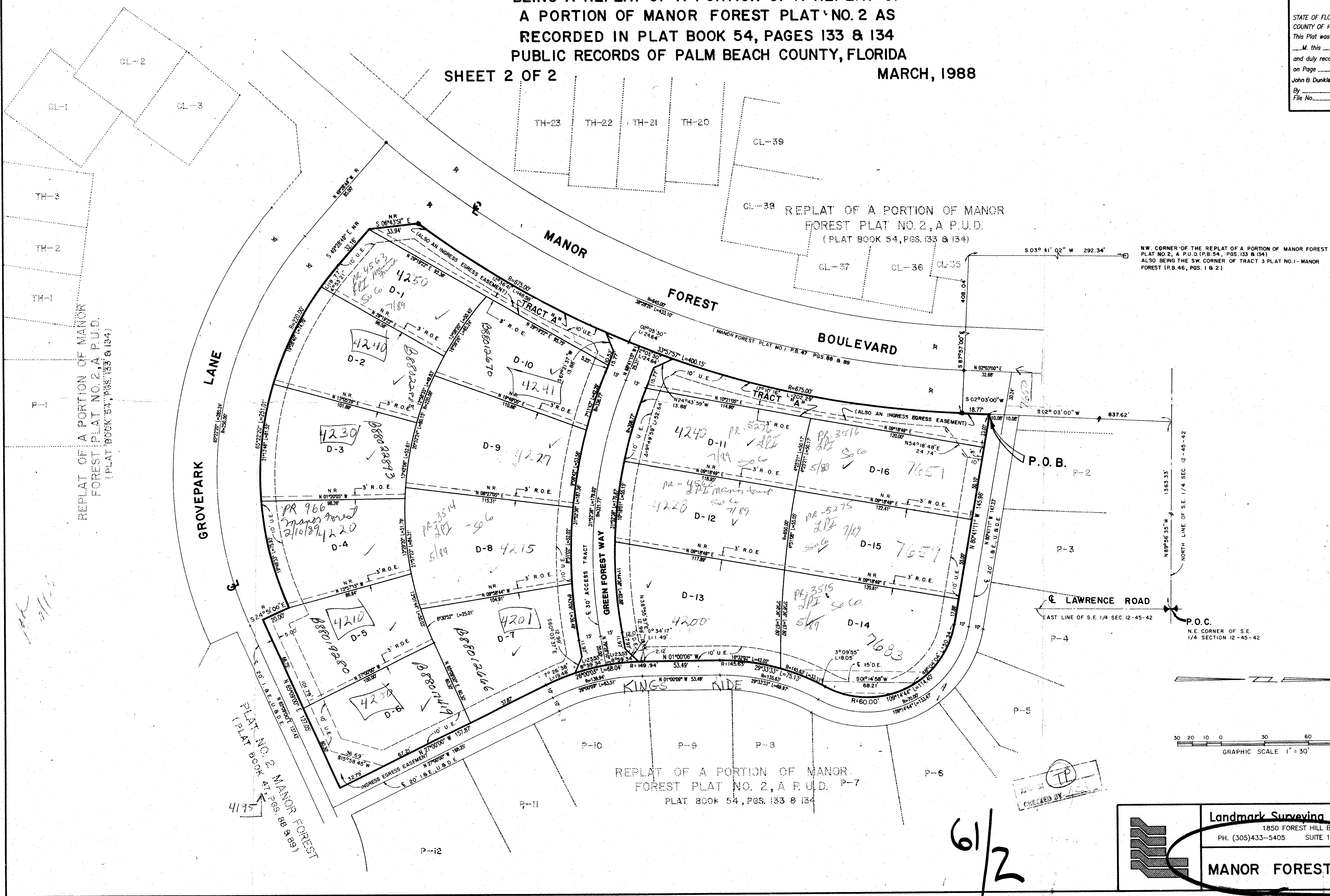
## A PART OF MANOR FOREST P.U.D.

LYING IN SECTION 12, TOWNSHIP 45 SOUTH, RANGE 42 EAST  
BEING A REPLAT OF A PORTION OF A REPLAT OF  
A PORTION OF MANOR FOREST PLAT NO. 2 AS  
RECORDED IN PLAT BOOK 54, PAGES 133 & 134  
PUBLIC RECORDS OF PALM BEACH COUNTY, FLORIDA

SHEET 2 OF 2

MARCH, 1988

STATE OF FLORIDA  
COUNTY OF PALM BEACH  
This Plat was filed for record at  
...M. this ... day of ... 19...  
and duly recorded in Plat Book No. ...  
on Page ...  
John B. Dunkle, Clerk of the Circuit Court  
By \_\_\_\_\_  
File No. \_\_\_\_\_



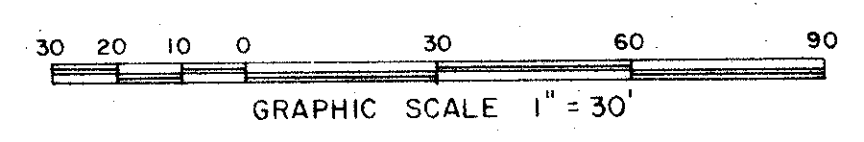
REPLAT OF A PORTION OF MANOR FOREST PLAT NO. 2, A P.U.D. (PLAT BOOK 54, PAGES 133 & 134)

REPLAT OF A PORTION OF MANOR FOREST PLAT NO. 2, A P.U.D. (PLAT BOOK 54, PAGES 133 & 134)

REPLAT OF A PORTION OF MANOR FOREST PLAT NO. 2, A P.U.D. (PLAT BOOK 54, PAGES 133 & 134)

REPLAT OF A PORTION OF MANOR FOREST PLAT NO. 2, A P.U.D. (PLAT BOOK 54, PAGES 133 & 134)

N.W. CORNER OF THE REPLAT OF A PORTION OF MANOR FOREST PLAT NO. 2, A P.U.D. (P.B. 54, PGS. 133 & 134) ALSO BEING THE SW. CORNER OF TRACT 3 PLAT NO. 1 - MANOR FOREST (P.B. 46, PGS. 1 & 2)



TP  
CHECKED BY

61/2

**Landmark Surveying & Mapping Inc.**  
1850 FOREST HILL BOULEVARD  
PH. (305) 433-5405 SUITE 100 W.P.B. FLORIDA

**MANOR FOREST PLAT 3**